



Sample assessment task	
Year level	5
Learning area	Languages
Subject	Indonesian: Second Language
Title of task	<i>Mau pesan apa?</i> (What would you like to order?)
Task details	
Description of task	<p>Students demonstrate their knowledge and understanding of vocabulary, language structures and grammatical items related to their local community.</p> <p>In Part A, formative assessment, they also demonstrates their skills in speaking Indonesian by participating in a role play where they play, at first, the waiter to take orders, and then the customer, to give a meal order, in an Indonesian restaurant.</p> <p>In Part B, summative assessment, they demonstrate their skills in speaking Indonesian by exchanging information with the teacher who plays the role of the waiter in an Indonesian restaurant.</p>
Type of assessment	Formative and summative
Purpose of assessment	This assessment aims to determine student learning at the time of the assessment. It establishes information on the students' ability to exchange information with their teacher about restaurant dishes and their preferences.
Assessment strategy	Oral performance – participate in a role play simulation activity
Evidence to be collected	Audio visual recording of role play
Suggested time	Part A – 25 minutes Part B – 5 minutes
Content description	
Content from the Western Australian Curriculum	<p>Communicating</p> <p>Initiate interactions with the teacher and peers, using descriptive and expressive language to exchange information about their local community</p> <p>Participate in guided tasks related to organising displays, planning outings and conducting events such as performances, or activities such as building models and completing transactions in places such as a café or a market place</p> <p>Gather and convey information and ideas in different formats from a range of texts related to personal and social worlds</p> <p>Understanding</p> <p>Notice pronunciation of phonemes such as <i>ng/ngg/ny</i> in the middle of words (<i>dengan, tangan, tinggal, tanggal</i>)</p> <p>Notice the difference in pronunciation of loan words from English, for example, <i>komputer, pensil</i></p> <p>Use context-related vocabulary and develop and apply knowledge of grammatical elements in simple spoken and written texts to generate language for a range of purposes, including:</p> <ul style="list-style-type: none"> referring to people and things using pronouns, for example, <i>kami, kita, kamu</i> directing others using imperatives, for example, <i>Jangan!; Cepat!</i> and inviting others using polite forms, for example, <i>Duduklah, Silahkan</i>

	<ul style="list-style-type: none"> • seeking information and explanation using question words, for example, <i>Dengan siapa?; Naik apa?; Untuk apa?</i> • indicating location in time using <i>pada</i> and place using <i>di</i> with <i>atas, dalam, belakang</i> • creating cohesion using conjunctions, for example, <i>lalu, sebelum, sesudah; Sesudah makan pagi saya pergi ke sekolah dengan adik saya.</i>
Task preparation	
Prior learning	<p>Students have prior knowledge of and exposure to:</p> <ul style="list-style-type: none"> • context-related vocabulary and grammatical items, including: specific vocabulary and word phrases, such as food, drink and adjectives to describe tastes, for example, <i>pedas, panas, asin, asam, dingin, manis</i> • dishes commonly served in Indonesian restaurants and the opportunity to discuss and identify them • the textual conventions of a role play.
Assessment differentiation	<p>Teachers should differentiate their teaching and assessment to meet the specific learning needs of their students, based on their level of readiness to learn and their need to be challenged.</p> <p>Where appropriate, teachers may either scaffold or extend the scope of the assessment tasks.</p>
Assessment task	
Assessment conditions	<p>The role play in Part A will take place between the students, with the teacher observing.</p> <p>The role play in Part B will take place between the teacher (or another speaker of Indonesian) and the student.</p>
Resources	<p>Task sheet</p> <p>Menu</p> <p>Order form</p> <p>Recording device</p>

Instructions for teacher

Prior to administering the task, the students will need to be:

- taught context-related vocabulary and grammatical items, including:
 - specific vocabulary and word phrases, such as food, drink and adjectives to describe tastes *pedas, panas, asin, asam, dingin, manis*
- provided with the opportunity to discuss and identify dishes commonly served in Indonesian restaurants
- taught the textual conventions of role plays, and the opportunity to practise them.

Task

Part A: Mau pesan apa?

This part of the task is not formally assessed.

Students work cooperatively in small groups to conduct a simple role-play in Indonesian, ordering food and drink at a restaurant.

Students take turns playing the part of the waiter and then the customer.

The waiter records each customer's preferences on the order form.

In the role of the waiter, students interact with their peers by:

- introducing the main dishes on the menu and the tastes.
- asking what customers want to order *Mau pesan apa?* and recording their answers.

In the role of customers, students interact with their peers by:

- responding verbally with *Saya minta (ikan bakar) pedas.*
- extending their order by using adjectives to describe the taste they prefer.

Part B: Mau pesan apa?

Provide students with Part B of the task.

Students are placed in small groups.

The teacher plays the role of waiter and introduces items on the menu.

Students follow along by reading the menu.

READ ALOUD

Waiter: *Mau pesan apa?*

Wait for student response.

Customer: *Saya minta (ikan bakar) pedas.* Use an adjectives to describe the taste they prefer.

Waiter Record answers.

Check for understanding by asking students what one of their peers ordered, for example:

Waiter: *Sally pesan apa?*

Customer: *Sally minta ikan bakar.*

Instructions to students

Mau pesan apa?

Part A: Mau pesan apa?

This part of the task will enable you to prepare for the assessment in Part B. You will be working in small groups to take part in a simple role play in Indonesian, ordering food and/or drink at an Indonesian restaurant.

You will take turns playing the part of the waiter and then the customer.

Waiters:

- Start by greeting your guests and introducing yourself.
- Point to and introduce three main dishes on the menu, for example: *Hari ini ada Ayam bakar, Tempe goreng dan Nasi pecel.*
- Ask what each person wants to order saying, *Mau pesan apa?*
- Record each customer's preference on the order form.

Customers:

- Listen to the waiter.
- Give your order by saying, for example, *Saya minta Nasi putih dan Ikan bakar.* Remember to use adjectives to describe the taste you prefer, for example, *Saya minta Ikan bakar pedas.*

When everyone in the group has had a turn to be both waiter and customer, hand in your order forms to the teacher.

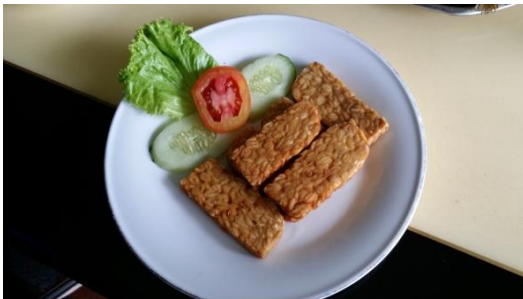
----- Menu -----



Sate kambing Rp 20 000



Nasi pecel Rp 15 000



Tempe goreng Rp 12 000



Gado-gado Rp 15 000



Ikan bakar Rp 25 000



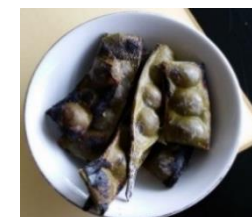
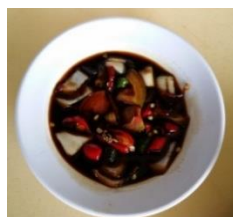
Ikan goreng Rp 20 000



Nasi putih Rp 5 000



Sambal / Cabai Rp 1000



Petai Rp 5 000

[Images used by kind permission of author]

Nama Pelayan:

Kelas:

Mau pesan apa? Saya minta...

Nama tamu	Pesanan	Harganya
1		Rp
2		Rp
3		Rp
4		Rp
5		Rp

When everyone in the group has had a turn to be both waiter and customer, hand in your order forms to the teacher.

Part B: Mau pesan apa?

Take part in a role play where you and your classmates will order food and/or drink in an Indonesian restaurant.

You will be placed in small groups.

Listen to your teacher role playing the part of the waiter, introduce items on the menu.

Read the menu.

Respond in Indonesian with your meal preference.

Give your order. Remember to use an adjective to describe the taste you prefer.

Be sure to listen to everyone in your group, as your teacher will ask you a question about what your friends have ordered.

Sample marking key

Part B: Mau pesan apa?

Description	Marks
Content	
Uses <i>Saya minta</i> [1] + menu item [1] to respond to the waiter, for example, <i>Saya minta Sate kambing</i> .	1+1
Describes the taste desired by using an appropriate adjective, for example, <i>pedas</i> .	1
Uses <i>dan</i> to create a compound sentence.	1
Check for understanding: Can state what one other customer in their group ordered, for example, <i>Dia minta Sate kambing</i> .	1+1
Subtotal	6
Description	Marks
Grammar and vocabulary	
Uses a good range of vocabulary and grammatical elements are used mostly accurately.	3
Uses a sufficient range of vocabulary is used to communicate information. Errors in grammatical structures are present but responses are mostly accurate and meaning is clear.	2
Uses a limited range of vocabulary and one word response are given. Occasional short phrases are offered but meaning is not always clear.	1
Subtotal	3
Description	Marks
Pronunciation	
Uses clear and accurate pronunciation and intonation.	3
Some inconsistency in pronunciation and intonation, but meaning is clear.	2
Inaccurate pronunciation makes meaning unclear.	1
Subtotal	3
Total	12