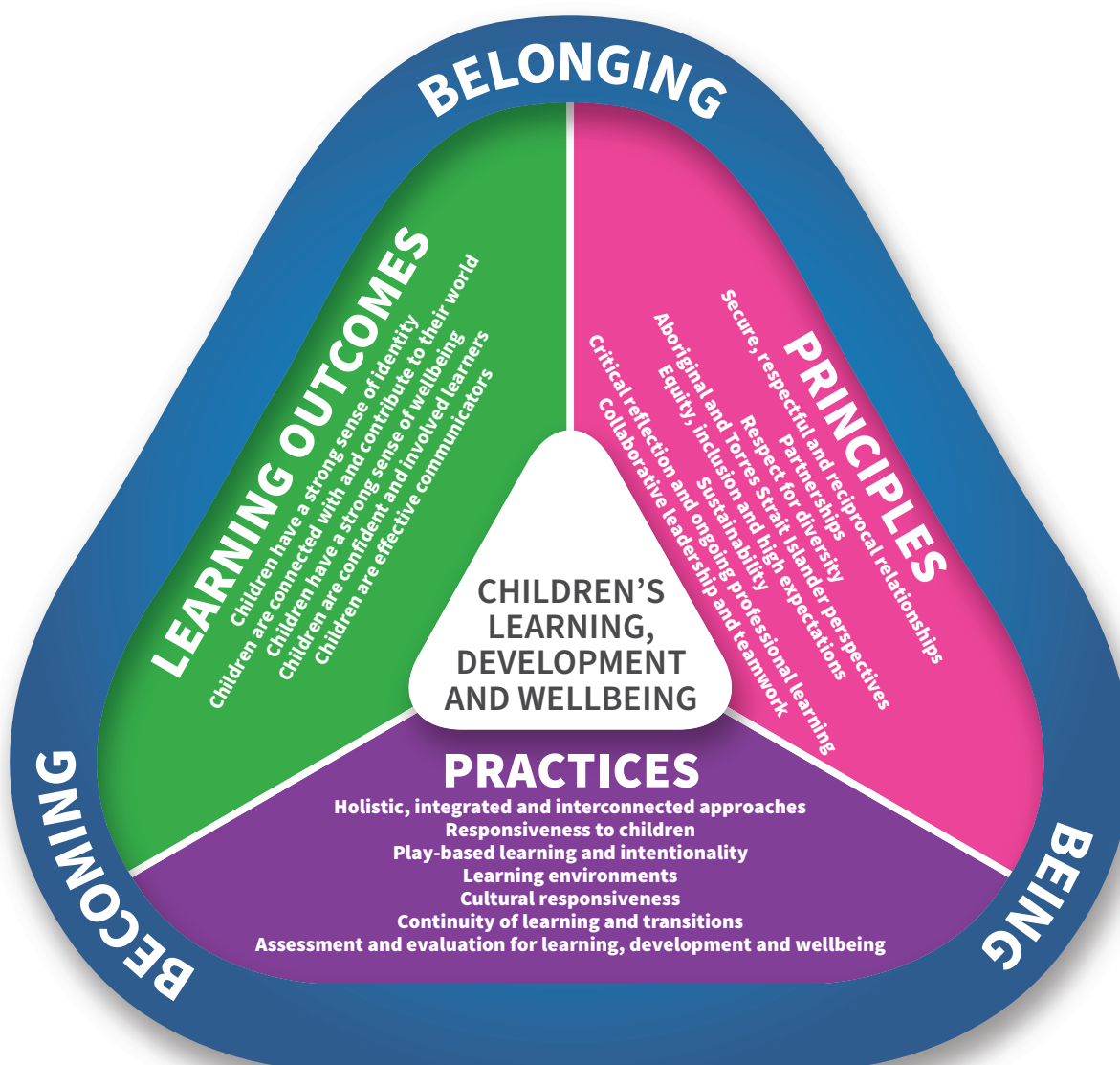


# ELEMENTS OF THE EARLY YEARS LEARNING FRAMEWORK

## Diagram 1

This diagram shows the integrated connections of the Vision, Principles, Practices and Learning Outcomes that centre on children’s learning, development and wellbeing. *Belonging*, *Being* and *Becoming* overlap all these elements.





## VISION

### BELONGING, BEING AND BECOMING

PRINCIPLES	PRACTICES	LEARNING OUTCOMES
<ul style="list-style-type: none"> <li>• Secure, respectful and reciprocal relationships</li> <li>• Partnerships</li> <li>• Respect for diversity</li> <li>• Aboriginal and Torres Strait Islander perspectives</li> <li>• Equity, inclusion and high expectations</li> <li>• Sustainability</li> <li>• Critical reflection and ongoing professional learning</li> <li>• Collaborative leadership and teamwork</li> </ul>	<ul style="list-style-type: none"> <li>• Holistic, integrated and interconnected approaches</li> <li>• Responsiveness to children</li> <li>• Play-based learning and intentionality</li> <li>• Learning environments</li> <li>• Cultural responsiveness</li> <li>• Continuity of learning and transitions</li> <li>• Assessment and evaluation for learning, development and wellbeing</li> </ul>	<ul style="list-style-type: none"> <li>• Children have a strong sense of identity</li> <li>• Children are connected with and contribute to their world</li> <li>• Children have a strong sense of wellbeing</li> <li>• Children are confident and involved learners</li> <li>• Children are effective communicators</li> </ul>