



NAPLAN 2025 Preparation

Presentation

19 February 2025

Juanita Healy

Executive Director, School Curriculum and Standards

Acknowledgment of Country

Kaya

The School Curriculum and Standards Authority (the Authority) acknowledges that our offices are on Whadjuk Noongar boodjar and that we deliver our services on the country of many traditional custodians and language groups throughout Western Australia.

The Authority acknowledges the traditional custodians throughout Western Australia and their continuing connection to land, waters and community.

We offer our respect to Elders past and present.

Platform Readiness Testing 2024

Thank you!

- Platform Readiness Testing (PRT) testing is an opportunity for schools to assist with testing the whole NAPLAN platform including any updates/changes prior to NAPLAN in the following year.
- It also provides schools with the chance to test the devices they intend to use for NAPLAN.

Test Dates for NAPLAN 2025

- Commences Week 6 of Term 1.
- Wednesday, 12 March – Monday, 24 March.
- Nine-day testing period
 - Week 6 – Wednesday, Thursday, Friday
 - Week 7 – Monday to Friday
 - Week 8 – Monday.
- Writing must be scheduled on Day 1 – Wednesday, 12 March.

NAPLAN From 2023, NAPLAN has moved to March. Read more about the NAP improvements .	2025	12–24 March See Test window See Ramadan and NAPLAN
	2026	11–23 March
	2027	10–22 March
	2028	15–27 March
	2029	14–26 March

<https://nap.edu.au>

Pre-testing Activities

2025 Activity

Principal details in SIRS were required by **30 January**. If this was not completed, **update SIRS as a matter of urgency**, and **email** naplan@scsa.wa.edu.au with the correct information. Incorrect principal details will delay the platform registration process.

Student Registration and Demographic (SRGDG) file upload of students in Years 3, 5, 7 and 9 was required to be completed by **13 February**.

Complete the *SCSA NAPLAN training 2025 – Principal* module and provide the incident response contact mobile phone number by **28 February**.

Complete the platform registration on **24 February**, noting that when registering, you are agreeing to ACARA's 'Statement of Compliance'. Once registered, invite your NAPLAN coordinators and School technical support officers as soon as possible.

Ensure all staff involved in NAPLAN 2025 have been provided with the 'Code of Conduct' and have completed the relevant SCSA training modules between **30 January and 11 March**.

Principal or NAPLAN coordinators are to ensure disability adjustments, exemptions, withdrawals and class groups have been added to the platform between **3 March and 11 March**.

School Readiness

- All schools are required, under the Australian Curriculum, Assessment and Reporting Authority's (ACARA) test protocols, to:
 - develop a school test schedule according to the prescribed test order, ensuring testing can be completed within the test window
 - communicate the test schedule to staff and the school community – including if and when catch-up testing will be held
 - distribute NAPLAN Information for parents and carers brochure. Copies of the brochure were sent with the pre-test materials ('welcome pack')
 - prepare classrooms by removing/covering materials displayed that may help students respond to the tests.

School Readiness

- All schools are required, under the Australian Curriculum, Assessment and Reporting Authority's (ACARA) test protocols, to:
 - ensure that parents/carers and the student are informed about, and have agreed to, the nature of any adjustment(s) the student will receive
 - adopt appropriate test preparation strategies that familiarise students with the process and question formats, but do not excessively rehearse students such that results reflect prepared work rather than students' own abilities.

Social Media Compliance and Promotional Resources

- Schools must ensure that videos or photographs are not taken during test sessions, except as necessary for troubleshooting technical issues.
- Schools can utilise the Resources page on the NAP website for infographics, posters and advice for social media accounts and newsletters at nap.edu.au/resources.

Ramadan and NAPLAN

- In 2025, the NAPLAN testing window overlaps with the Islamic holy month of Ramadan.
- Schools are encouraged to schedule NAPLAN tests first thing in the morning to ensure fasting students' energy levels are at their highest.
- Schools should encourage parents and carers to discuss any concerns with NAPLAN and Ramadan to identify what support measures are available, including with scheduling tests.
- Further information is available on the NAP website at nap.edu.au/naplan/for-schools/ramadan-and-naplan.

School Technical Readiness

- An online technical readiness training module was released on 12 November 2024.
- Principals with new School Technical Support Officers should ask them to complete this now.
- Before NAPLAN 2025 commences, it is important to check:
 - that your local connectivity – bandwidth and wireless access points are sufficient
 - that all devices to be used are compliant with the minimum specifications
 - the devices to be used have the latest version of the Locked Down Browser (LDB)
 - that the LDB works in the local network
 - students have access to the NAPLAN testing platform.
- It is recommended the *NAPLAN Training and Practice* environment is used to test your local network and devices. This is available now.

Windows Locked Down Browser

- Schools were advised today of a late change to the Windows LDB.
- Updating the LDB has been necessary to respond to recent developments by Microsoft that may unduly impact the student test experience.
- The new LDB (v5.9.2) is the **only** version that will be supported for NAPLAN 2025.
- Available from the Assessform website from Thursday, 20 February.
- Changed Icon to purple to easily identify the new Windows version.



- Refer to the email for more detail.

Student Readiness

- Schools must ensure all students are familiar with the device they will be using for NAPLAN, the functionality of the online platform and the range of interactive item types in each domain.
- The recommended method of familiarisation is to perform a practice test using the LDB within the *NAPLAN Training and Practice* environment at assessform.edu.au.
- Students requiring further familiarisation with item types outside of the school environment can be directed to the public demonstration site at nap.edu.au/naplan/public-demonstration-site.

Training and Practice Environment

In preparation for NAPLAN, utilise the NAPLAN Training and Practice environment

- The training and practice environment is available, access information was provided via the NAPLAN Updates.

The training and practice environment has some limitations:

- it is not a secure environment
 - do not invite actual NAPLAN coordinators
 - do not add actual student information
- it uses 'mock students'
- it uses the green generic secure grid card provided via an Excel spreadsheet in *Update 1*
- if adding disability adjustment codes – they need to be allocated to a 'mock student'
- If any preparation work is done in this environment, it will not be transferred into the actual test platform.

Training and Practice Environment

Advantages:

- ✓ requires the latest LDB (ensures the correct one is being used)
- ✓ tests loading functionality of the LDB (would identify issues e.g. black screen)
- ✓ load-tests local network capacity if expected peak load is used
- ✓ requires a Test Administrator Pack to be produced
- ✓ provides Test Administrator (TA) with full administration experience
- ✓ provides students with an opportunity to enter a session and 'mock student' code
- ✓ provides students with an opportunity for a practice test experience through an 'omnibus' test and/or choice of two writing tests.

Demonstration Tests

Using the NAPLAN demonstration tests through the LDB as an alternative to the Training and Practice environment.

Advantages:

- ✓ still tests loading functionality of LDB (may identify technical issues)
- ✓ still load-tests local network capacity if expected peak load is used
- ✓ *almost* provides students with full test experience (login codes automatically pre-filled)
- ✓ a little less work for schools
- ✓ students can do this at any time, including at home.

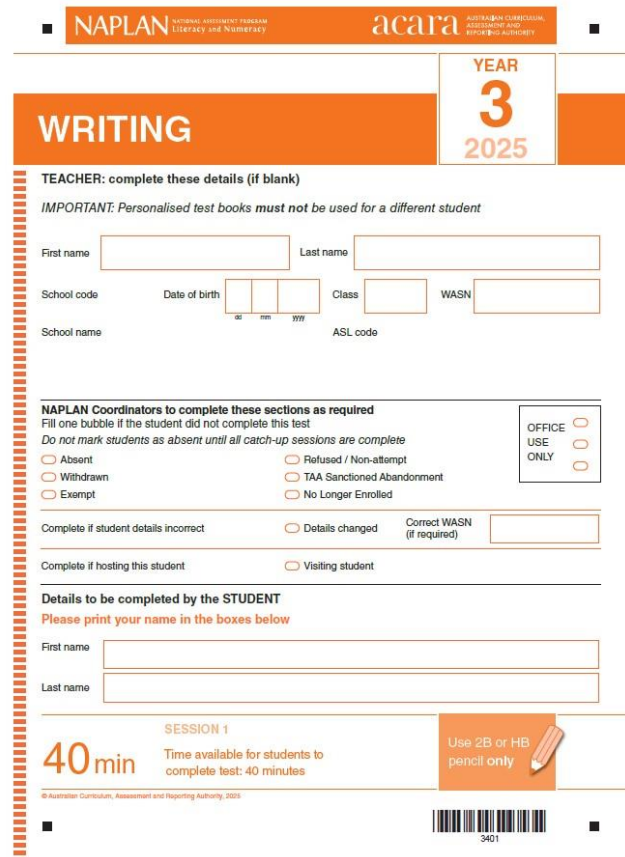
Disadvantages:

- ✗ does not require TA pack to be produced
- ✗ does not provide TA with full Test Administration experience
- ✗ no capacity for NAPLAN coordinators/principals to see what has been completed.

Changes to NAPLAN Administration

Year 3 writing test books:

- Do not use books printed with another student's details.
- NAPLAN coordinator to complete the participation bubbles on the front cover.
- Return all used and unused test books.



NAPLAN NATIONAL ASSESSMENT PROGRAM
LITERACY AND NUMERACY

acara ANTI-CORRUPTION, COMPLIANCE AND
REPUTATION AUTHORITY

YEAR 3 2025

WRITING

TEACHER: complete these details (if blank)

IMPORTANT: Personalised test books must not be used for a different student

First name Last name

School code Date of birth Class WASN

School name ASL code

NAPLAN Coordinators to complete these sections as required
Fill one bubble if the student did not complete this test
Do not mark students as absent until all catch-up sessions are complete

<input type="radio"/> Absent	<input type="radio"/> Refused / Non-attempt	OFFICE USE ONLY <input type="radio"/>
<input type="radio"/> Withdrawn	<input type="radio"/> TAA Sanctioned Abandonment	
<input type="radio"/> Exempt	<input type="radio"/> No Longer Enrolled	

Complete if student details incorrect Details changed Correct WASN (if required)


Complete if hosting this student Visiting student

Details to be completed by the STUDENT
Please print your name in the boxes below

First name

Last name

SESSION 1
40 min Time available for students to complete test: 40 minutes

Use 2B or HB pencil only 

© Australian Curriculum, Assessment and Reporting Authority, 2025

3401

Post-testing Activities

2025 Activity

It is important to move your school from 'Delivering' to 'Results' phase in the NAPLAN platform as soon as possible at the completion of testing in your school. This task should be completed no later than **27 March**.

Lodge writing test materials via Australia Post to Fuji DMS by **COB 17 March**. Return alternative format 'special print' materials by **24 March**.

Confirm your school contacts in SIRS are correct to ensure the student results are sent to the correct person, by **6 June**.

Securely dispose of all test materials that are not required to be returned at the end of the test security period **27 March**.

Download and securely store student and school results for future reference when these are available.

Changes to delivery and return of Year 3 writing test materials

2025 Activity

SCSA and FujiFilm DMS are using Australia Post for test material delivery and returns.

You should have received an activation email to the Fujifilm NAPLAN WA Website on **17 February**. The link is only active for 48 hours.

Schools will be supplied with a registered post return label for the test materials package.

Schools must return all used and unused Year 3 writing test materials.

NAPLAN coordinators are to complete the participation 'bubbles' on the front cover of test books and these must match the participation status of the student on the platform.

You or a nominated delegate need to lodge the package via Australia Post and then record the date lodged on the Fujifilm website.

NAPLAN reporting 2025

The ACARA proposed dates for the release of NAPLAN results:

- Thursday, 24 April – initial Student and School Summary Report (SSSR) excluding writing results
- Friday, 13 June – final SSSR release including all test domains
- Monday, 21 July – Individual Student Reports (ISRs) for parents.



School Curriculum
and Standards
Authority

NAPLAN Helpdesk

Phone: 9442 9442

Email: naplan@scsa.wa.edu.au



Adopting and Adapting the Australian Curriculum within the Western Australian Curriculum

A phased approach

The Authority has a phased approach in adopting and adapting the Australian Curriculum version 9 to the Western Australian context. The graphic indicates the phases of curriculum development and consultation, familiarisation and implementation for each of the learning areas in the *Western Australian Curriculum and Assessment Outline (the Outline)*.

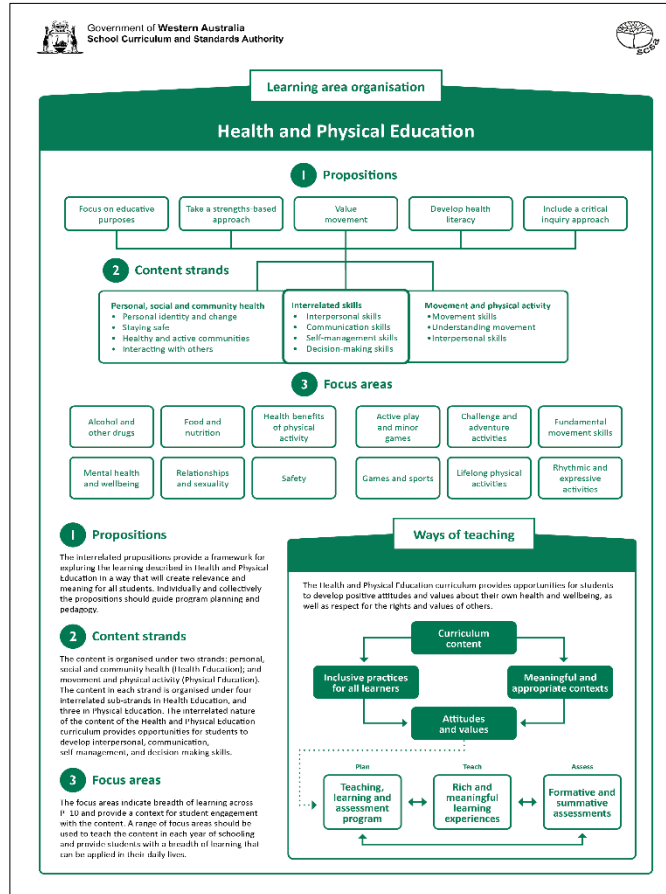
	English	Health and Physical Education	Humanities and Social Sciences	Languages	Mathematics	Science	Technologies	The Arts
Implementation	2025	2025	2026	2027	2026	2026	2026	2027
Familiarisation	2024	2024	2025	2026	2025	2025	2025	2026
Consultation	2023	2023	2024	2025	2024	2024	2024	2025

Implementation in 2025 – English and Health and Physical Education

- The revised Pre-primary to Year 10 Western Australian Curriculum for English and Health and Physical Education is being implemented this year.
- A revised Learning Area Overview provides the Rationale, Aims, Organisation and Ways of teaching and Ways of assessing to support teaching, learning and assessment.
- Professional learning, both in-person and online, was provided during 2024 to support teachers with implementation of the revised curriculum in both learning areas.
- The Curriculum Support Materials have been updated to align with the revised curriculum and will be progressively published on the Authority website.
- The website has a new interface for the revised curriculum with improved functionality for users allowing for year-level content to be displayed side-by-side, with or without examples, Year level descriptions and Achievement standards.

Infographic – HPE

A learning area infographic, used in professional learning workshops for the learning area, illustrates the interrelationship between the components of the curriculum.



Familiarisation in 2025

- The four learning areas in familiarisation during this year are:
 - Humanities and Social Sciences
 - Mathematics
 - Science
 - Technologies.
- The revised Scope and sequence documents, Year level descriptions, Achievement standards and Summary of changes are available on the Learning Area homepage.
- The Authority will be providing professional learning for each learning area to support teachers to plan for implementation in 2026.
- Professional learning workshops commence in Term 2 and will be advertised through the Authority's *K-6circular* and the *7-12circular*.

Development and consultation in 2025

- The Arts and Languages learning areas begin the development and consultation phase to adopt and adapt the Australian Curriculum version 9 for the Outline during this year.
- Initially the Principal Consultants in the learning area will review the feedback provided to the Australian Curriculum, Assessment and Reporting Authority (ACARA) from consultation on the Australian Curriculum version 9, conducted in May 2021, to revise the curriculum.
- The Authority will then work with the Curriculum Advisory Committees to review and revise the draft curriculum prior to public consultation.
- Consultation workshops, both in-person and online, will occur during Terms 2 and 3 and teachers will be notified through the K-6circular and the 7-12circular.

Links



W

k10outline.scsa.wa.edu.au/home/assessment/testing/naplan



f

facebook.com/SCSAWA



f

facebook.com/SCSAWateachers

© School Curriculum and Standards Authority, 2025

This document – apart from any third party copyright material contained in it – may be freely copied, or communicated on an intranet, for non-commercial purposes in educational institutions, provided that the School Curriculum and Standards Authority is acknowledged as the copyright owner, and that the Authority's moral rights are not infringed.

Copying or communication for any other purpose can be done only within the terms of the Copyright Act 1968 or with prior written permission of the School Curriculum and Standards Authority. Copying or communication of any third party copyright material can be done only within the terms of the Copyright Act 1968 or with permission of the copyright owners.

Any content in this document that has been derived from the Australian Curriculum may be used under the terms of the Creative Commons [Attribution 4.0 International \(CC BY\)](https://creativecommons.org/licenses/by/4.0/) licence.